

· INSTITUTE · OF · HISTORIC ·  
BUILDING · CONSERVATION

*The home of the conservation professional*

## **IHBC e-letter Issue 2: June 2009**

### **Members e-letter update & forward planning**

This second issue of our new e-letter highlights recent developments discussed at IHBC Council on 28 May, and related activities. Our business plan is the over-arching challenge just now, and suggestions and feedback to shape our next business plan, scheduled for 2010, are very welcome. These can be communicated through our volunteers survey questionnaire linked on our home page. Please take a minute to do the survey anyway, it will help us in so many ways.

### **Conference & council meeting: Cardiff, 23 & 24 September 2009: Conservation: the economic benefits**

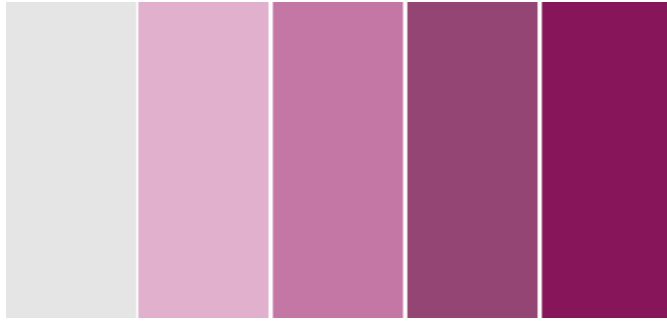
Each September council meetings are held outside London, helping raise our profile and support Branch objectives across the UK. The September 2009 Council will meet in Cardiff and link with a conference organised by our Wales Branch exploring the economic benefits of historic environment conservation. Delegates lucky enough to be among the first 80 or so booking will participate in a complimentary dinner at Cardiff Castle, to be attended by the Welsh Assembly Government heritage Minister and the Chief Executive of Cadw. Web booking will be opening in the coming days, so keep an eye on our home page and e-mail alerts, as places are limited and strictly allocated on a 'first come' basis.

### **IHBC Professional Indemnity (PI) Insurance Scheme agreed**

Council has agreed a proposed PI insurance scheme to be operated with Locktons. Developed following a detailed survey of members needs, this will be a customised service addressing specific sector needs, with attractions for our members in the public sector as well as the private. It will be launched at the Annual School, and details will be available on the web site soon after.

### **New Communications and Outreach (C&O) Committee**

Charles Strang, formerly representative on council for the Scotland Branch, has taken the helm of our Communications and Outreach (C&O) Committee, the committee responsible for developing the communications strategy to underpin our evolving business plan. The committee has also expanded its membership, and will be reporting to council on how best to move forward.



## **CPD**

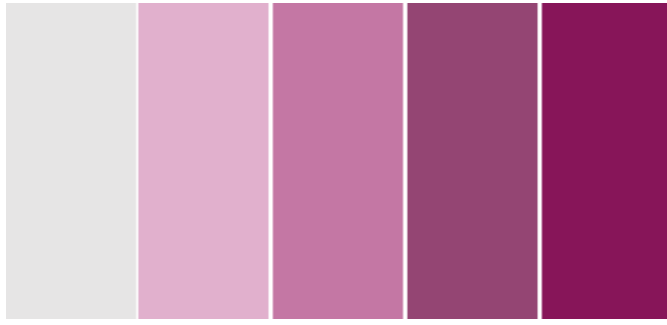
CPD returns have just been received from all our council members and relevant staff, in line with the mandatory CPD requirements agreed at our 2001 AGM. The paper approved by Council for forward planning will be made available on the 'Recent papers' section of our web site, as CPD is central to strategic developments across our sector. Members will be delighted (or daunted!) to know that some returns recorded up to ten times the minimum CPD requirement of 25 hours per annum. The review and report will guide us in refining current guidance and procedures and shaping on-line CPD resources, while in the coming months we will call for returns from a random selection of 2% of Full Members.

## **Annual School 2009: Buxton 11-13 June 2009**

This is the last chance to book places at our Annual School. You can book on-line until Tuesday, 9 June, or by contacting Devon DeCelles on her mobile until end Wednesday 10 June (0780 737 9226). Despite record numbers, we can still accommodate more delegates on both the Full School and the Day School. Bob Kindred will oversee the issue of Context covering the Annual School, and is keen to obtain short reports from delegates on the individual presentations from speakers and/or about the tours and seminars (copy by 20 July). This is an excellent opportunity for IHBC members to contribute to Context, especially if you haven't done so before. Bob would be happy to hear from anyone prior to the School who would be interested in providing a short item but will also be seeking volunteers attending the school. He can be contacted at [government@ihbc.org.uk](mailto:government@ihbc.org.uk), or [bob.kindred@ipswich.gov.uk](mailto:bob.kindred@ipswich.gov.uk), or in person at the School itself.

## **Annual School 2010: London 10-12 June 2010**

The Annual School for 2010 is being organised by our London Branch, with the Day School at the Royal College of Physicians in June. A flyer will be circulated at the coming School in Buxton, and English Heritage is again supporting the event. Joint themes will link conservation services in local authorities with leisure. Potential sponsors should contact Seán O'Reilly at [director@ihbc.org.uk](mailto:director@ihbc.org.uk), while rates range from £5,000 for a main sponsor, to £1,000 as part-sponsor. The huge constituency of our members, and the profile of the IHBC, means that such sponsorship could be one of the best strategic investments a business can make in response to the recession.



### **Sector survey and job threats**

Since our last e-letter we have launched the results of the joint survey of local authority and English Heritage resources in England, to great effect. We received an especially sympathetic response in Planning, while under the guidance of our Policy Secretary Mike Brown we are setting the strategy for implementing the recommendations and developing the second phase of the research. In the interim any news of job threats – actual or anticipated – should be communicated to Seán O Reilly, at [director@ihbc.org.uk](mailto:director@ihbc.org.uk), who is maintaining a confidential list to inform our programme.

### **Jobs advertising**

The recession also means that getting the right staff in place is more important than ever. Our web site has a direct link from the home page so that advertisers – even Human Resources – can easily post adverts on our site, and notify our members of opportunities. Rates are extremely competitive, and all are encouraged to use the service to reach specialists uniquely skilled in historic environment conservation.

### **New 'Branch Connection Day', Birmingham, November 2009**

The national office will host another 'Branch Connection Day' in November coming, helping our Branch network and volunteers contribute their time most effectively to the charitable objectives of the IHBC. This time we will focus on the operation and application of our membership assessment criteria, so committee members with membership responsibilities, or their representatives, will be invited to a day exploring current procedures in membership assessment and evaluation, from CPD and conservation courses to the actual application form itself. Details will be circulated to Branch Committee members in the coming weeks.